



ELECTRO-PNEUMATIC Tagless Printing Machine

Brand quality at fair price
Plug & play operation

2/3 COLOR OPTIONS AVAILABLE TB - 60/90/130 MODELS

GREEN MACHINES FOR SUSTAINABLE FUTURE

ELECTRO-PNEUMATIC SERIES

Technical Features	Units	TB 60		TB 90		TB 130	
1. Part no.		160 000		190 000		130 000	
2. Ink -/ doctoring cup	Φ mm	60	65*	90	95*	130	135*
3. Cliché size	mm	70x140		100x215		150x300	
4. Print image size max	mm	Φ 55 (38 x 38)	60*	Φ 85 (60x60)	90*	Φ 125 (88x88)	130*
5. Single cycle		Yes		Yes		Yes	
6. Multiple printing double/ triple		Yes (Programable)		Yes (Programable)		Yes (Programable)	
7. Continuous run		Yes		Yes		Yes	
8. Cycle counter		Yes		Yes		Yes	
9. Number of cycles (in continuous run)	Cycles/h	Up to 2000		Up to 1600		Up to 1250	
10. Pad stroke onto cliché	mm	20-50		30-70		35-80	
11. Pad stroke onto work piece, variably adjustable	mm	20-80		35-100		25-120	
12. Pad installation height max	mm	66		100		120	
13. Force of pressure	N	750		1200		3000	
14. Variable speed control		Yes		Yes		Yes	
15. Noise emission	dB (A)	75-85		75-85		75-85	
16. Length	mm	600		702		925	
17. Height	mm	535		670		850	
18. Width	mm	250		300		420	
19. Weight* (net/gross)	kgs	50/60		80/100		140/170	
20. Drive		Electro-pneumatic		Electro-pneumatic		Electro-pneumatic	
21. Control		PLC		PLC		PLC	
22. User interface HMI		4"		4"		7"	
23. Connected load	kW	0,2		0,2		0,2	
24. Prefuse		6A		6A		6A	
25. Power supply (special voltage on request)		230 V 1/N/PE		230 V 1/N/PE		230 V 1/N/PE	
26. Power frequency	Hz	50-60		50-60		50-60	
27. Control voltage	V/DC	24		24		24	
28. Interface for integration into automations		D SUB/37 POLE		D SUB/37 POLE		D SUB/37 POLE	
29. Air consumption/cycle	NL	3		5.7		17.5	
30. Pneumatic supply with fine filter 5 um	Bar	6		6		6	
31. Stand (DIY)		Optional		Optional		Optional	
32. Air shower		Optional		Optional		Optional	
33. Registration cross pointer (Red Laser)		Optional		Optional		Optional	
34. Light		Optional		Optional		Optional	
35. Global languages - default English	27	Yes		Yes		Yes	



* Machine May Vary In Actual

Complete Tagless Printing Solutions Under One Roof.

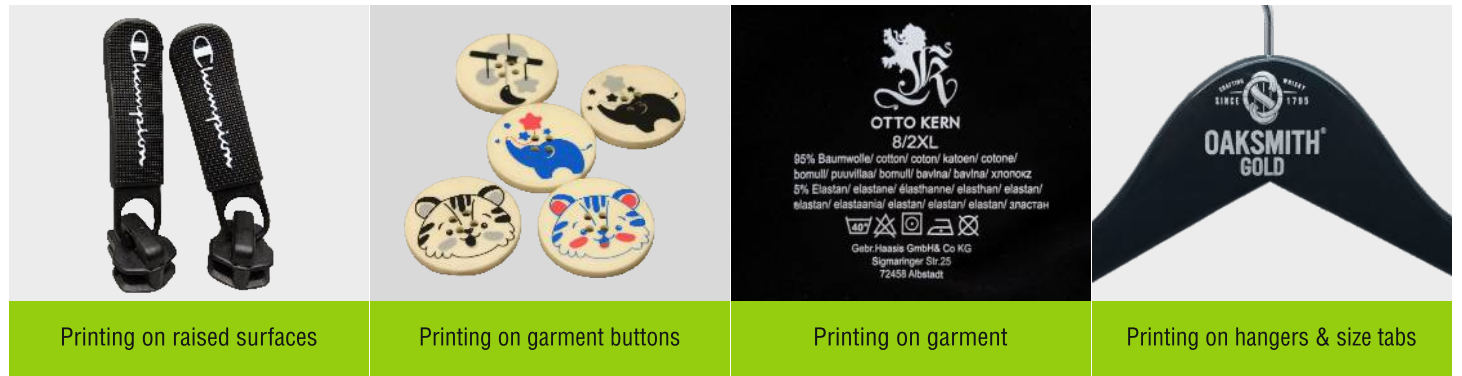
Tagless Printing Machine

- One/Two Colour & Long prints
- Simple to use, table-top, light weight & neat operation
- High quality printing speed up to:
 - ~ 2500 tags/hr
 - ~ 1250 tags/hr with double print system
 - ~ 500 tags/hr with 3P system
 - ~ Two pick up & one print
 - ~ Specially designed for printing on dark fabrics
 - ~ Pad delay function
- Smaller plates (clichés) = Faster speeds = Lower costs
- Ink consumption as low as 15g ink/8hr operation
- 1-minute quick changeovers
- Cliché runs even up to 500,000
- Pour & mix directly in the ink cup, prevent ink wastage
- Easy direct-to-fabric printing
- 2 color optional



Salient Features & Advantages of Tagless Printing Machines

- Compact, simple and environmental friendly machines.
- Non-magnetic ink cup rings of 80 HRC hardness of tungsten carbide or high-tech ceramic as an alternative. Ring can be changed once worn off.
- Electro-pneumatic drive with PLC control and finger touch HMI from Europe. Low energy consumption.
- Optional air shower to improve pad transfer.
- Highest tampon pressure in a similar sized machines to use even 22 shore A silicone rubber pads. Generally harder pads give better print quality.
- Variable contact pressure on ink cup to reduce friction on cliché.



Tagless Printing



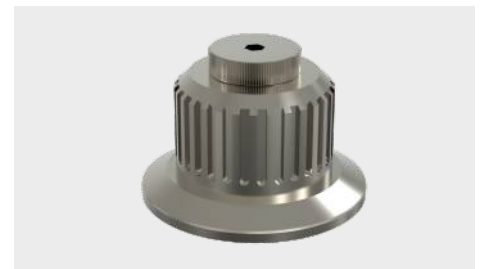
Accessories



Quick Change Over System
Standard tong, table & cup comes with the Machine. It improves the efficiency, is neat & reduces time of change over.



Pressure Ring
Non magnetic 2 part cup, system.



Non-magnetic ink cup made of tungsten carbide

The Company/ Firm reserves the right to terminate, revoke, modify, alter, add and delete any one or more of the terms and conditions outlined in the brochure. The Company/ Firm shall be under no obligation to notify the user of the amendment to the terms & conditions and the user shall be bound by such amended terms and conditions.

Plates/Clichés

Steel 10 mm Cliché/Plate



Thin 0.5 mm Cliché/Plate



Magnetic base plate is separate



- Thin pad printing steel Cliché/Plate.
- Thick steel Cliché/Plate.
- Can give over 500,000 impressions.
- Laser engravable plates.
- Designed to accommodate varying applications & machine types.

Tagless  &  Plates/Clichés

- Great sharpness
- Accurate depth
- Very hard
- Rust resistant

Silicone Pads



- Excellent pick up & transfer of the ink.
- High tear strength & resistance to solvents & inks.
- Long pad life hardness & form stability.
- Last up to 500,000 impression.
- Easy to clean.
- Special silicone adapted to print on fibrous fabrics.
- Our 60 model (printing area upto 55 mm) covers upto 90% of industry requirement.
- High volume ink pickup & transfer for dark garments.

Special  Silicone pads/tampons are used in the pad printing of Tagless neck labels on garments. It transfers the precise, sharp & high resolution image from the cliché to the garment surface to be printed.

Tagless Printing Inks

Farbatex FT-003 Series is **OEKOTEX®** Certified



- Complies to:
- OEKOTEX® & NAMSA • Child Safety : EN 71 - PARA 3
- Pantone & color matching (TCX/TPX/TPG)

- Wide range of Direct-to-Fabric printing inks
- Non-itchy, non-toxic
- Highly opaque, highly elastic
- Great transfer quality
- No back-side ink bleeds
- Resistant to 50+ wash cycles
- EO (Extra Opaque) inks for dark garments
- Non-Toxic and bright colours
- OEKOTEX® certified inks
- Fast drying.
- Soft to touch, no cracking, peeling or breaking.
- 50+ wash cycles
- Global expert support



ZDHC MRSL conformance Level-1



Scan for Certification



Manufactured by : Spinks Impex Plot No. 172 & 174 Village Katha, Baddi, Distt Solan, H.P. 173205. India.

Spinks World (H.Q.) : Plot no.135, Pace City-1, Sec 37 Gurugram 122001, Haryana. India.

Sales Offices:

India Ahemdabad | Baddi | Bengaluru | Chennai | Delhi | Gurugram | Hyderabad | Haridwar | Kolkata | Manesar | Mumbai | Pune | Tirupur

Global Bangladesh | Nepal | Srilanka | UAE | USA | Switzerland

Email : info@spinksworld.com

Website : www.spinksworld.com

Contact : +91 9210626626

